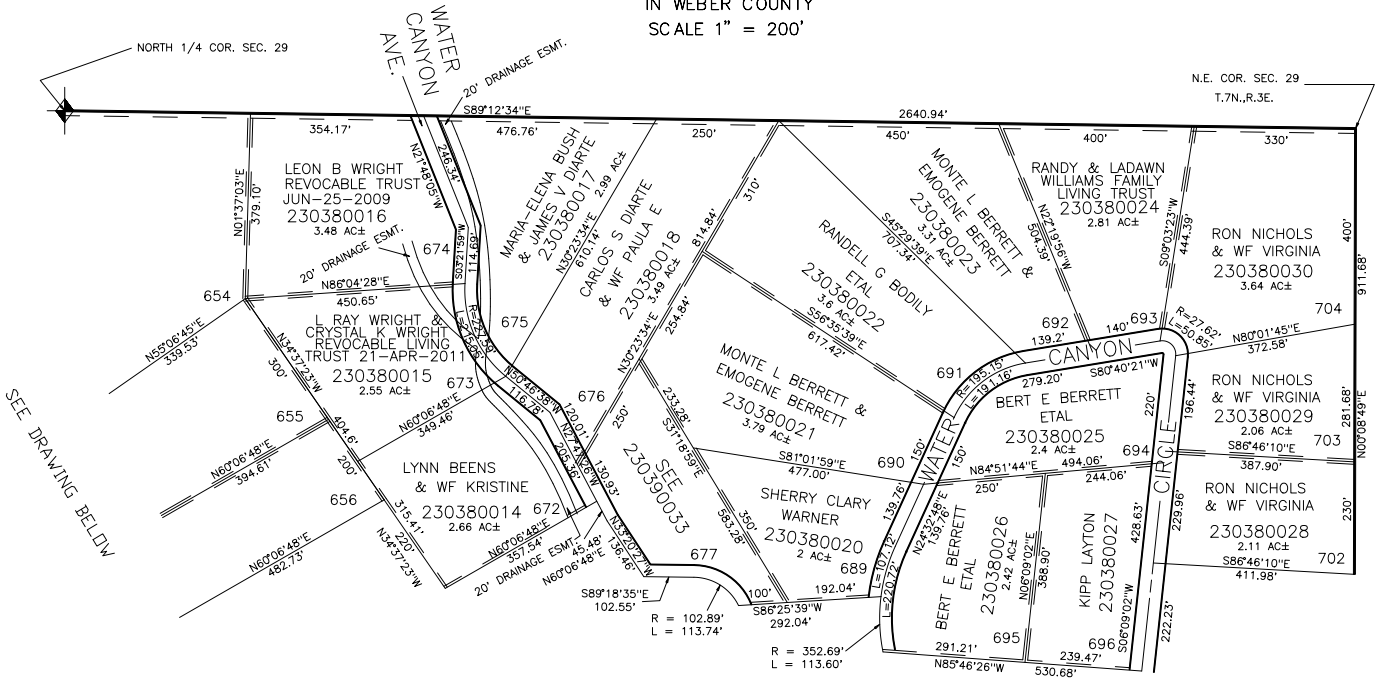


TAXING UNIT: 58

PART OF SEC. 29, T.7N., R.3E., S.L.B. & M.
EVERGREEN PARK SUBDIVISION NO. 1
 LOTS 551-552, 599-602, 650-656, 672-677, 689-696, 702-704

IN WEBER COUNTY
 SCALE 1" = 200'

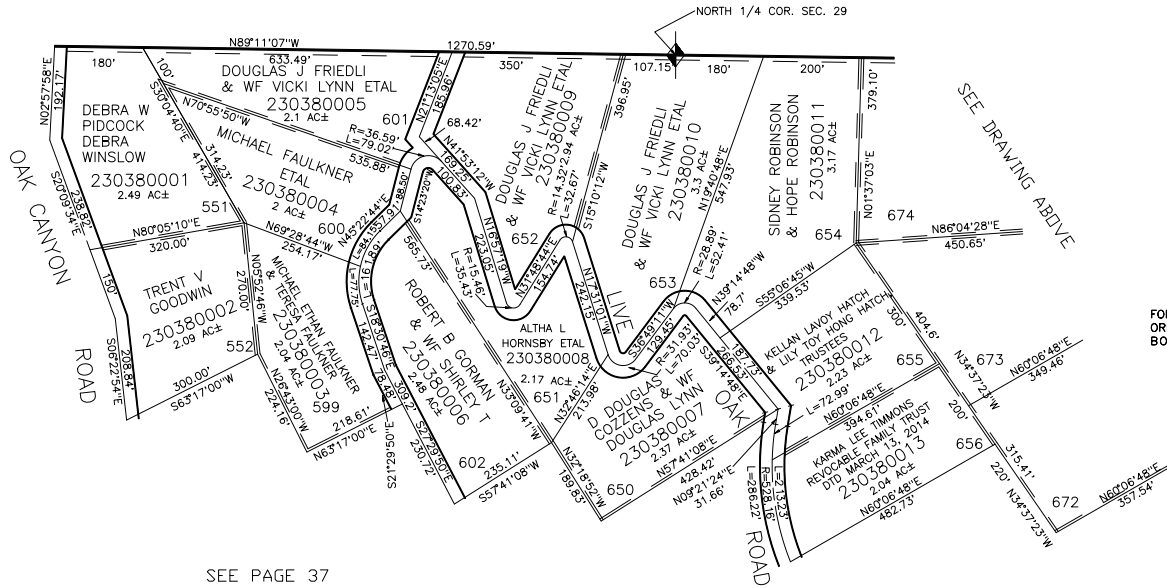


SEE PAGE 39

ALL DASHED LINES SHOWN
 ON LOT LINES ARE 10' UTILITY
 EASMENTS UNLESS OTHERWISE NOTED.

ALL ROADS ARE
 PRIVATE R.O.W.'S

SEE PAGE 32



SEE PAGE 37

FOR COMPLETE ENG DATA SEE
 ORIGINAL DEDICATION PLAT IN
 BOOK 13, PAGE 56 OF RECORDS.